



BANK FOR INTERNATIONAL SETTLEMENTS

BIS Working Papers

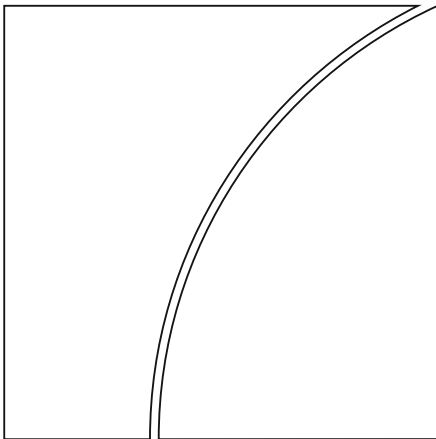
No 568

Output gaps and policy stabilisation in Latin America: the effect of commodity and capital flow cycles

by Enrique Alberola, Rocio Gondo, Marco Lombardi and Diego Urbina

Monetary and Economic Department

June 2016



JEL classification: E44, E52, E62, H30, H62

Keywords: Output gap, commodity prices, capital flows, procyclicality, fiscal policy, Latin America

BIS Working Papers are written by members of the Monetary and Economic Department of the Bank for International Settlements, and from time to time by other economists, and are published by the Bank. The papers are on subjects of topical interest and are technical in character. The views expressed in them are those of their authors and not necessarily the views of the BIS.

This publication is available on the BIS website (www.bis.org).

© *Bank for International Settlements 2016. All rights reserved. Brief excerpts may be reproduced or translated provided the source is stated.*

ISSN 1020-0959 (print)
ISSN 1682-7678 (online)

Output gaps and policy stabilisation in Latin America: the effect of commodity and capital flow cycles

Enrique Alberola¹, Rocio Gondo, Marco Lombardi and Diego Urbina

Abstract

We provide a measure of the output gap that filters out the impact of the commodity and net capital inflows booms for Latin American countries. These two factors temporarily boost output and so are likely to push up estimates of potential growth in the region to unrealistic levels, thereby resulting in an underestimation of the output gaps during the upswing of the commodity cycle. We also shed light on the interaction between the two components. The results show that commodity prices has been the dominant factor explaining deviation of activity from sustainable levels. The timely consideration of these factors could prevent a procyclical fiscal policy bias in the region.

JEL classification: E44, E52, E62, H30, H62

Keywords: Output gap, commodity prices, capital flows, procyclicality, fiscal policy, Latin America

¹ Bank for International Settlements. Address for correspondence: BIS Americas Office, Ruben Dario 281, 11580 Mexico D.F. Mexico. Tel: +52 5591380291. Without implicating, the authors acknowledge useful comments from Claudio Borio, Philip Turner and Luiz Pereira da Silva and participants at the Seminars at LACEA, Banco de España and Banco de Mexico.

Introduction

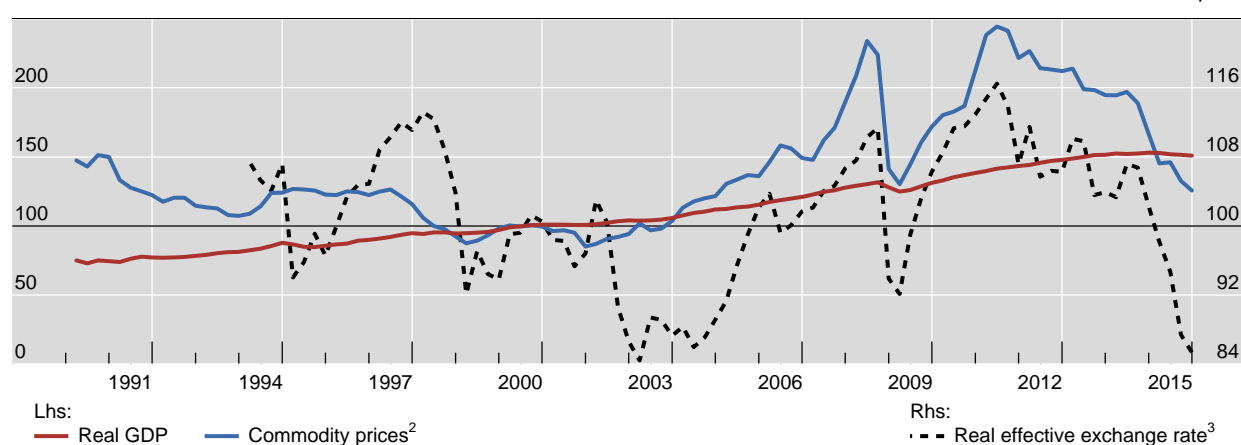
From 2003 to 2013, Latin America experienced a decade of sustained growth and unprecedented economic and financial stability. The shock from the global financial crisis was short-lived, and the swift recovery of the region fed the perception that countries could sustain higher rates of growth than in the past.

A much improved macroeconomic framework, a reduction in financial vulnerability and a broadening of the domestic demand base were seen as key factors of that change. Easy global financing conditions facilitated large capital inflows. The long commodity price boom played a big part in this. A sustained increase of commodity demand and prices led to significant terms-of-trade gains and boosted real GDP. As Kohlscheen et al (2016) have shown, higher commodity prices tend to appreciate the currencies of commodity-exporting countries, and Latin American currencies rose. Graph 1 shows how commodity prices (blue line) and real exchange rates (dashed line) in Latin America have moved together in the past ten years or so. These circumstances shaped developments in resource-rich Latin American countries with low saving rates – and thus heavy dependence in external financing. The upward trend in commodity prices from 2001 to 2010 was interrupted only briefly during the global recession. However, after 2011 commodity prices fell.

Real GDP, effective exchange rate and commodity prices for Latin America¹

2000 = 100

Graph 1



¹ Weighted averages based on 2000 GDP and PPP exchange rates for Brazil, Chile, Colombia, Mexico and Peru. ² Country-specific commodity price index calculated using 3 digits exports weights for SITC Rev. 3 (as in E Kohlscheen et al (2016)); deflated by United States core consumer price index. ³ Broad indices; an increase indicates appreciation.

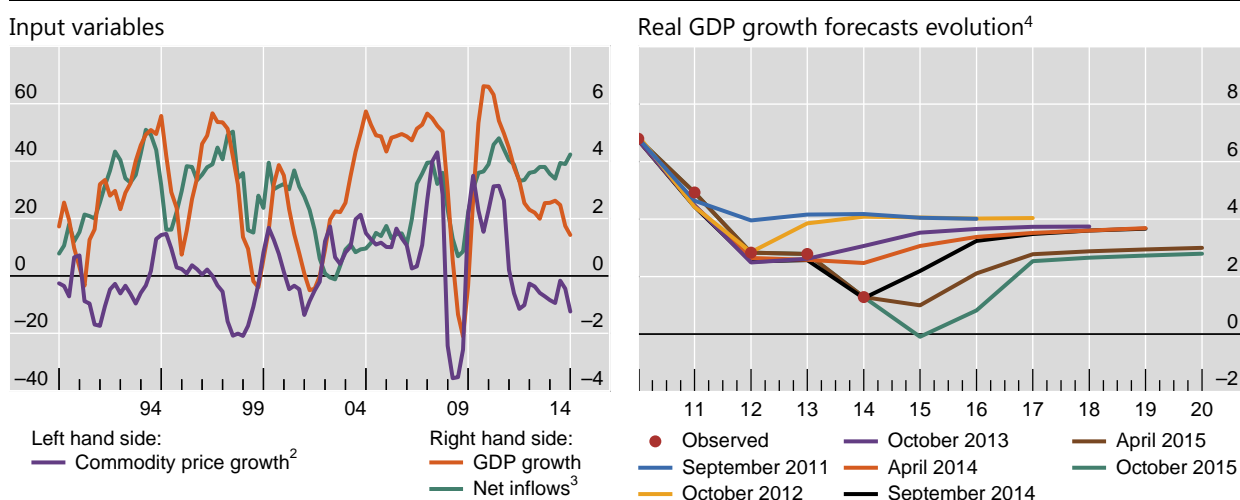
Sources: Kohlscheen E, F Avalos and A Schimpf, "When the walk is not random: commodity prices and exchange rates", *BIS Working Papers*, no 551, March 2016; Bloomberg; Datastream; IMF, *Balance of Payments; Primary Commodity Prices, World Economic Outlook*; UN Comtrade; UNCTAD Statistics; World Bank; national data; BIS calculations.

To illustrate these links, Graph 2 (left panel) displays the evolution of the GDP growth, net capital inflows as a percentage of GDP and the annual growth rate of commodity prices since the nineties for the aggregate of Latin American included in our sample. The evolution of net capital inflows has certain similarities to the swing in commodity prices: they increased strongly in the early 2000s, recovered rapidly after the global financial crisis and moderated towards the end of the sample. A certain co-movement is visible among the three variables, in particular during the last decade.

GDP, commodity prices and net inflows in Latin America¹

In per cent

Graph 2



¹ Weighted averages based on GDP and PPP exchange rates for Brazil, Chile, Colombia, Mexico and Peru. ² Country specific commodity price index calculated using 3 digits exports weights for SITC Rev. 3. ³ As a share of GDP. ⁴ Including also Argentina.

Sources: Bloomberg; Datastream; IMF, *Balance of Payments*; *Primary Commodity Prices*, *World Economic Outlook*; UN Comtrade; UNCTAD Statistics; World Bank; national data; BIS calculations.

The sharp slowdown in growth in most countries of the sample has come as a surprise to many. The co-movement between the variables in Graph 2 suggests that not only the current disappointing growth but also the robust recovery from the crisis is closely linked to the reversal in the external conditions. The fall in commodity prices, which was not anticipated, has severely affected growth prospects, it is remarkable how growth forecasts have been systematically revised downwards in the region coinciding with the reversal in commodity prices (Graph 2, right panel).

Let us take for instance Brazil, a country whose share of commodity exports has averaged more than 60%² in the last decade. Graph 3 shows the strong positive correlation between changes in commodity prices and growth rates in Brazil. The correlation is even stronger with the changes in the growth forecasts, suggesting that economic performance is perceived to be closely associated with the evolution of commodity prices.

Expectations of long-term growth in Latin America, boosted by the boom in commodity prices, have been scaled back. The IMF's five-year ahead forecasts, which can be seen as a proxy for the long-term expectations of potential growth, have been revised down from 4% to 3%.

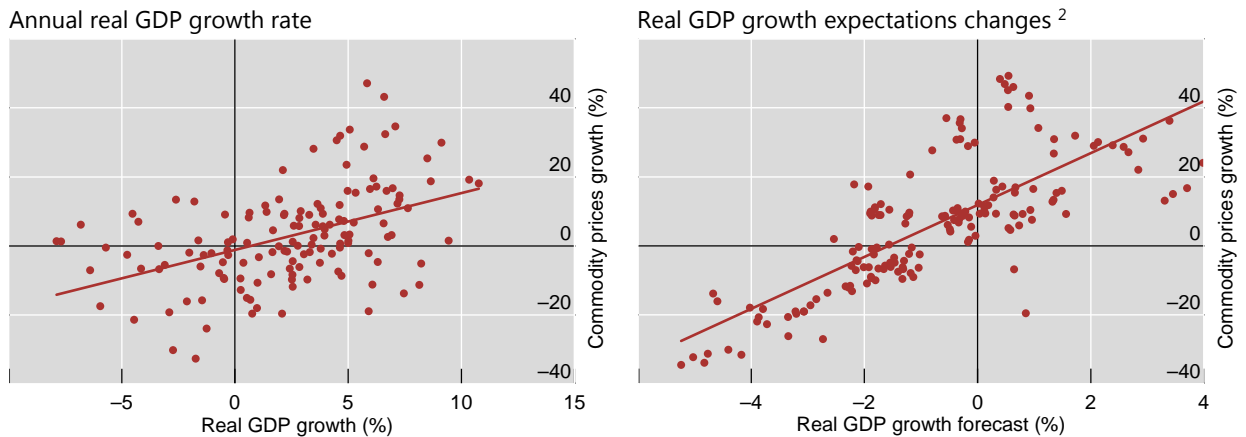
This paper identifies two key variables which may have boosted growth rates in Latin America above sustainable levels. It follows the spirit of recent work in advanced economies in incorporating financial cycles into the estimation of the output gaps (see Claessens et al (2011), Borio (2012), Borio et al (2013, 2014) or Rabanal and Taheri (2015)).

² According to data from UN Comtrade.

Correlation of commodity prices and GDP growth in Brazil from 2003 to 2016¹

In per cent

Graph 3



¹ Country specific commodity price index calculated using 3 digits exports weights for SITC Rev. 3. ² Revisions to forecast is defined as $rev_t = y_{t,m} - y_{t-1,m}$, where y is the forecast for year t made in month m . Commodity prices are brought forward one period since when forecast is made it is already observed.

Sources: Bloomberg; Consensus economics; Datastream; IMF *Primary Commodity Prices*; UN Comtrade; UNCTAD Statistics; World Bank; national data; BIS calculations.

The first variable is financial – net capital flows-, which typically drive financial cycles in Latin America. There is a large literature linking the sharp economic cycles in the region to the boom and busts of capital flows, the famous sudden stops: Edwards (2004), Kaminsky et al (2005), Calvo and Talvi (2005). This variable was in preference to credit growth and property prices which are the reference variables in the identification of financial cycles in advanced economies³. One reason is data limitations in Latin America. From a more conceptual viewpoint, the use of credit growth faces the tricky issue of how to determine the trend or sustainable rate of credit growth in an economy with low financial development, reversed by repeated crisis and in a process of financial deepening.

The second variable is commodity prices. A common feature of the Latin American economies under study is the importance of commodities in their economic evolution (see for instance, Cespedes and Velasco (2012)), so all of them may have benefitted from the boom in terms of growth.

Booms in commodity prices tend to raise real GDP in the short term by increasing the value and production of a key production factor in the economy (natural resources) and lifting the demand for ancillary goods and services. But it is an open question how far such booms raise potential growth in the longer term⁴. By attracting capital and increasing investment in the resource sector, booms may raise potential output. And this may provide financial resources which could be in turn used to increase investment in other sectors of the economy. However, the so-called Dutch disease (Corden (1984)) operates in the opposite direction. The positive terms of trade (with the corresponding real exchange rate appreciation) and income shock

³ See Amador et al (2016) for an application with credit and asset prices growth for Latin American countries.

⁴ See IMF (2015), for a detailed theoretical and empirical analysis

associated with commodity booms shift production out of non-commodity tradables and into the non-tradable service sectors, with lower relative productivity. If the manufacturing base of the economy – the main non-commodity tradable – is reduced in a permanent way, potential growth can be reduced, too, as the tradable sector usually enjoys higher productivity levels and growth⁵. The large real exchange rate appreciation rates in Graph 1 suggest these effects can be significant.

For our analysis, however, it is enough that commodity booms increase the estimates of growth potential through a protracted increase in demand. The positive terms of trade and income shock derived from the commodity booms boosts demand, enabling the economy to post high rates of growth during the duration of the boom. Moreover, the positive terms of trade shock will improve the trade balance transitorily, disguising the external imbalances for a protracted time and reinforcing the perception of sustainability of the high growth rates.

A sense of optimism may get entrenched in the economy, increasing internal and external confidence and strengthening demand further. This positive sentiment towards the country derived from the commodity boom may also reinforce the capital flow cycle, through higher capital inflows

Under these circumstances, the assessment of the cycle –using the standard approaches- may become distorted: output gaps are underestimated in the booming phase, reflecting this perception of higher potential growth.

How could output gaps be computed in order to control for these factors? There are several approaches to the measurement of the output gap: on one end, approaches that are entirely data-driven. For instance, the Hodrick-Prescott filter and other univariate time series filters (Christiano and Fitzgerald (2003), Baxter and King (1999)); on the other hand, approaches which impose some model-based structure on the data – for example a production function or a Phillips curve – as the key economic relationship to pin down ‘sustainable’ output. From an econometric point of view these models can be cast into a multivariate state-space form featuring restrictions inspired by economic theory. In this respect, the Phillips curve has often been seen as a key ingredient. However, the structural changes in the relationship between inflation and unemployment in recent decades and the difficulties to estimate ‘sustainable’ employment rates has eroded the reliability of this approach.

In recent times, there have been several attempts to correct the contamination of the estimated output gaps from the impact of transitory or non-sustainable factors other than inflation (see Benes et al (2010) and Alberola et al (2014) among others) A particularly relevant addition is the methodology used by Borio et al (2013, 2014) to include financial cycle considerations in the estimation of the output gap, by correcting the HP filter with variables associated to the financial cycle, such as the credit growth and the house prices.

Here we apply a similar approach using commodity prices and net capital inflows as the variables to control for in the estimation of the output gaps.

From the analysis, commodity prices turn out as a more determinant booster of the cycle than net capital flows. The resulting output gaps, adjusted for commodity prices and (when relevant) capital inflows, are between one and three percentage points of GDP higher compared to standard univariate filters. For instance, while the

⁵ Even if the commodity shock is transitory. See Alberola and Benigno (2016)

standard approach yielded gaps of up to 1.5 pp of GDP in the recovery, the output gap with the adjusted filter reaches up to 5 pp and in all countries surpasses the 3 pp at some point. For the regional aggregate the peak of the output gap is 3.5 pp, compared with 1 pp of the usual method. When we take the whole upswing of the commodity cycle, this divergence also appears in most countries prior to 2008. The implied differences in potential output are also large. At the peak of the divergence the level of estimated potential output is between 2.2% and 4.8%, (2.4% for the regional aggregate). These differences have narrowed in the last years, after commodity prices have fallen and capital inflows have moderated.

The results are maintained when, instead to usual ex-post estimates, we compute the real time estimates, that is, recursively estimating the output gap adding new observations. Real time computation of output gaps comes closer to actual policymaking, therefore we use them to assess the policy implications of our analysis. Acknowledging that output gaps had been higher during the expansionary phase would have led to more prudent monetary and fiscal policies. This is particularly relevant for the analysed countries, as the commodity cum capital inflows cycles introduce an additional procyclical bias into monetary policy, through their impact on exchange rates.

The paper is structured as follows: next section describes the data and performs a preliminary analysis to reveal some of the key relations among the variables. Section II explains the empirical approach and section III shows the main results. In section IV we present a policy discussion based on the comparison between the real time adjusted output gaps and those considered by the economic authorities. Section V concludes.

I. Data and descriptive statistics

We estimate the adjusted GDP gap using a data set of three variables: real GDP, country-specific commodity prices, and capital inflows (gross and net). Countries under scrutiny are Brazil, Chile, Colombia, Mexico and Peru, and we consider a sample ranging from 1981 to 2014, at quarterly frequency.

For Real GDP we use national sources and data covers from Q1 1981 to Q1 2015⁶. Real GDP is seasonally adjusted and it is also annualized using a four-quarter moving sum.

For data on financial flows, we construct the series of gross capital flows by foreigners (inflows) and residents (outflows) as a share of GDP using both annual and quarterly data from the financial account in Balance of Payments (BoP) of the IMF⁷. Gross financial inflows (outflows) are defined as the sum of external liabilities (assets) comprising foreign direct, portfolio and other investment; we exclude monetary authorities' holdings. The series of net inflows are constructed as the difference between gross financial inflows (liabilities) and gross financial outflows (assets). For each country we use four-quarter cumulative net inflows, scaled by nominal GDP

⁶ For Brazil, we also use Datastream and CEIC to make its data as long as possible backwards in time.

⁷ We use the versions of the Balance of Payments Manual 5 and 6. We also work out the methodological differences between both versions so that the figures are comparable.

(from World Economic Outlook, IMF). Annual data is linearly interpolated and joined to form quarterly figures in cases where only annual data are available.⁸

As the goal of the analysis is to compute output gaps, the choice of net capital flows for the exercise appears as more appropriate as this variable is expected to have a closest link to demand than gross inflows⁹ Only results using net capital inflows are reported in what follows.

We use the country-specific commodity price indices (expressed in US dollars) developed by Kohlscheen et al (2016). This is a weighted average out of a basket of 83 commodity prices and commodity trade exports using 3-digit SITC Rev.3. The number of commodity prices used is based on the availability of data.¹⁰ Commodity trade export shares act as weights; therefore we use the average of exports between 2004 and 2013. Prices are deflated by the U.S. consumer price index. Finally, we calculate annual percentage changes for each country.

In our analysis, we take the natural logarithm of real GDP. As in Borio et al (2013), we adjust net inflows and country-specific commodity prices using Cesàro averages.¹¹ In the case of net inflows we subtract its Cesàro average directly on the levels, while for commodity prices on the annual growth rate.

A first investigation into the data is to compute the correlations between commodity prices and net capital inflows, as displayed in Table 1. Contrary to our expectations, both variables are only strongly and positively correlated in some cases. For the whole period only Brazil fits the prior for the whole and the second part of the sample (2003-14) and Peru and Chile (at 10% significance) for the first part of the sample. In more cases, the correlation is negative and significant, like Mexico and Chile for the whole sample commodity prices and capital flows are not strongly related overall¹². The exception is Brazil and some periods in other countries. As a matter of fact, the correlation is negative in several countries/periods.

⁸ Specifically, for Brazil and Mexico, we have purely quarterly data from Q4 1981 to Q1 2015; for Chile, quarterly from Q4 1991 to Q1 2015, annual data for previous periods; for Colombia, annual data from Q4 1981 to Q3 1994, quarterly data from Q4 1996 to Q1 2015; for Peru, quarterly data from Q4 1981 to Q4 1984, annual data from Q1 1985 to Q3 1991, and quarterly figures from Q4 1991 to Q4 2013.

⁹ As a robustness test of the paper, we replicate the results with gross inflows. They are qualitatively the same, although the adjusted output gaps for the countries where gross capital flows enter into the filter are between 1 and 2 pp higher.

¹⁰ For daily commodity prices, we use Datastream and Bloomberg; for monthly data, IMF Primary Commodity Prices, Global Economic Monitor Commodities and Food and Agriculture Organization of the United Nations. Monthly prices are interpolated, following a compound-growth rate method, into daily frequency.

¹¹ Cesàro means allow a faster convergence to the sample mean to the population mean when time series are very cyclical. The Cesàro mean of y is defined as $CM = T^{-1} \sum_{t=1}^T x_t$ where x_t is a partial sum define as $x_t = T^{-1} \sum_{i=1}^t y_i$. For net inflows we use a sample from 1980 to 2014, while for country-specific commodity prices the sample starts in 1981 and ends in 2014.

¹² This results could be due to the importance of the stabilisation fund which invest part of the cumulated amounts abroad and this counts as a gross outflow. Correlations with gross inflows are non significant, although in the last part of the sample it is still negative. For the rest of countries results do not vary substantially when using gross inflows.

Country specific commodity prices and net inflows correlation¹

Table 1

	1990 to 2014	1990 to 2002	2003 to 2014
Brazil	0.25**	0.01	0.34**
Chile	-0.42***	0.24*	-0.58***
Colombia	-0.02	0.01	-0.27*
Mexico	-0.21**	-0.35**	-0.02
Peru ²	0.02	0.36**	-0.1

¹ For the country specific commodity prices, we use annual growth rate.*** Significant at 1%; ** significant at 5%; * significant at 10%. ² For Peru, data starts in Q4 1991 and ends in Q4 2013.

Source: Author's calculations.

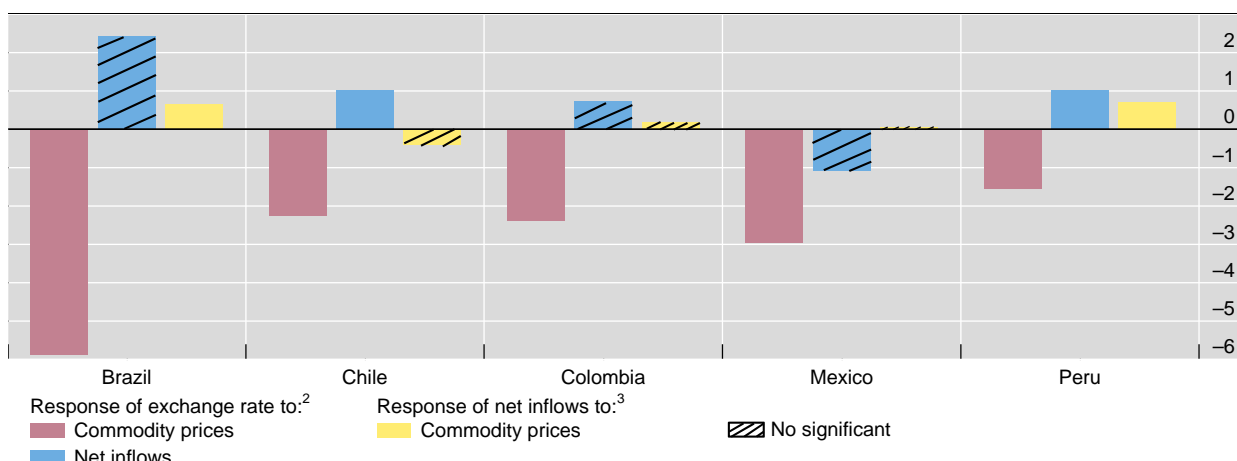
To further illustrate the dynamics of the linkages between the relevant variables we resort to a simple VAR. The VAR is built around the idea of an international bloc featuring, in this order, the (country-specific) commodity price index, the Fed funds rate and the VIX. The international bloc is followed by two domestic variables: the real effective exchange rate and net financial inflows. The recursive identification scheme is loosely based on a slow-to-fast criterion, as it is customary practice.¹³ So, commodity prices are driven by an exogenous shock process to which US monetary policy is assumed to respond instantaneously. Net inflows are ordered last, which means we remain agnostic on exclusion restrictions and allow them to respond contemporaneously to the shocks to all other variables. The VAR is estimated for each country using quarterly data from 1994Q1. Due to the relatively short sample size compared to the number of variables, we could only include two lags.

Selected results are summarised in Graph 4. The yellow bars in the graph display the impulse response of the net inflows to one positive standard deviation shock to commodity prices; a dashed pattern implies non-significance. The graph also represents the response of the exchange rate to commodity prices and net inflows.

The response of net inflows to commodity prices is positive and significant for Brazil and Peru, signalling that higher commodity prices attract financial inflows. In the rest of countries it is non-significant.¹⁴ The response of the exchange rate to commodity price shocks (red bars) is strong and significant in all cases, implying an appreciation following a positive shock. Remarkably, the exchange rate (blue bars) depreciates in some cases as a response to a positive shock to net inflows, and this effect is statistically significant in the case of Chile and Peru.

¹³ Slow-to-fast Choleski orderings are intuitive and easy to implement, but of course suffer from important limitations and caveats of which we are aware. The most relevant one is probably that variables excluded from the system (in our case, notably, domestic and foreign economic activity) may play a role in shaping shocks. However, we stress that the VAR analysis proposed here is just for illustrative purposes.

¹⁴ The response of commodity prices to the other shocks is mostly non-significant, in line with the identifying assumptions. In some case, commodity prices only respond significantly to US monetary policy. This is in line with previous studies that have highlighted the role of US monetary policy in driving commodity prices (Anzuini et al 2013).



¹ Response to Cholesky one positive s.d. innovations. Negative exchange rate movements indicate appreciation. ² Responses in per cent. ³ Responses in percentage points.

Source: Author's estimations.

II. The empirical approach. The multivariate filter

To empirically assess the role that commodity prices and financial inflows may have in affecting estimates of the output gap, we resort to the methodology recently proposed by Borio et al (2013, 2014), the so-called finance-neutral (FN) output gap. The starting point is the state-space representation of the popular HP filter:

$$\Delta y_t^* = \Delta y_{t-1}^* + \varepsilon_{0,t}, \quad \varepsilon_{0,t} \sim N(0, \sigma_0^2) \quad (1)$$

$$y_t = y_t^* + \varepsilon_{1,t}, \quad \varepsilon_{1,t} \sim N(0, \sigma_1^2) \quad (2)$$

where y_t is (log) real GDP and $*$ denotes its potential (unobserved) level. It is commonplace to calibrate the variances of the error terms so that their ratio (the so-called signal-to-noise ratio) is equal to 1600, which roughly corresponds to a business cycle of about eight years.

Borio et al (2013) propose to augment (2) with a set of observed variables that are capable of accounting for output fluctuations around potential. Equation (2) is therefore rewritten as:

$$y_t - y_t^* = \gamma x_t + \varepsilon_{2,t}, \quad \varepsilon_{2,t} \sim N(0, \sigma_2^2) \quad (3)$$

where x_t is a vector containing additional explanatory variables. Borio et al (2013) propose setting the signal-to-noise ratio so that the relative volatility of the business cycle around potential is the same as in the standard HP filter¹⁵:

$$\text{var}(y_t - y_t^{*HP}) / \text{var}(\Delta^2 y_t^{*HP}) = \text{var}(y_t - y_t^{*FN}) / \text{var}(\Delta^2 y_t^{*FN}). \quad (4)$$

Borio et al (2013) suggest that the explanatory variables should be financial factors that can account for above-potential growth experienced during financial booms. The approach is however more general, as x_t can in principle contain any

¹⁵ Despite the fact that the length of the commodity cycle is longer than the business cycle. As explained in the paper (page 8, bottom) this allows for direct comparability of the results.

variable that embeds useful information on the slack/tightness of the economic landscape. In a companion paper, Borio et al (2014) argue for example that at the current juncture, inflation does not embed relevant information for major advanced economies, and therefore estimates of the output gap that hinge on the Phillips curve may be misleading.

III. Results

The first step of our empirical analysis relates to model selection. For each country, we estimated models featuring both explanatory variables (commodity prices and net inflows), as well as one variable at the time.¹⁶ Results are presented in Table 2 and differ across countries. In the first column, both variables are used in the filter. For Brazil, capital inflows are non-significant, as in Chile. In the rest of countries, both variables retain a high degree of significance. When the model is re-estimated using commodities alone (second column), we observe that all countries show significant results. By contrast, net inflows alone (third column) are significant for all countries but Chile.

Results from estimated models Table 2

		Model with commodities and net inflows		Model with commodities		Model with net inflows	
		Coefficient	t-statistic	Coefficient	t-statistic	Coefficient	t-statistic
Brazil	Constant	0.89	33.09	0.89	20.12	0.90	21.94
	Commodities	0.03	7.39	0.04	7.79
	Net inflows	0.04	1.35	0.16	3.80
Chile	Constant	0.95	0.24	0.95	0.24	0.95	23.26
	Commodities	0.01	4.16	0.01	4.18
	Net inflows	0.00	0.00	0.00	0.00
Colombia	Constant	0.91	21.14	0.95	0.24	0.87	31.29
	Commodities	0.01	3.57	0.01	3.21
	Net inflows	0.14	6.77	0.16	5.23
Mexico	Constant	0.82	17.00	0.89	18.36	0.84	17.80
	Commodities	0.02	2.83	0.02	2.30
	Net inflows	0.25	4.08	0.23	3.12
Peru	Constant	0.85	16.28	0.95	30.38	0.80	15.07
	Commodities	0.02	3.50	0.02	3.04
	Net inflows	0.15	5.54	0.16	5.77

¹ Shaded blocks correspond to the chosen model for the empirical results

Source: Author's calculations.

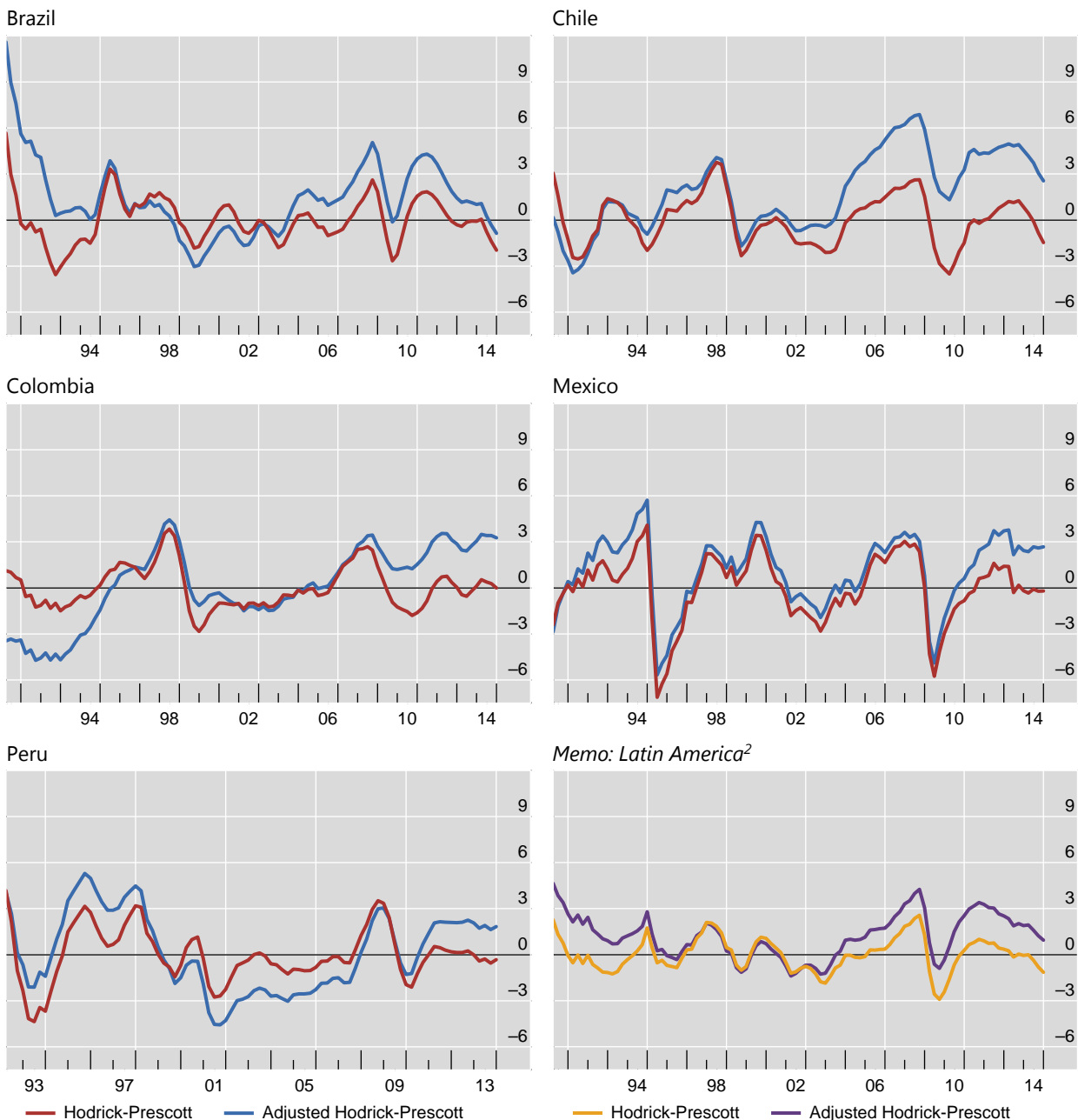
¹⁶ In terms of the lag structure, we use only one lag of each explanatory variable. Such lag is chosen based on maximising the R² of the regression. [Report exact lag structure in appendix]

Based on these results, we retain as baseline model the commodities-only model for Chile and Brazil, and the two-variable model for Colombia, Mexico and Peru, that is, the shaded specification in Table 2. In Graph 5, we compare the estimated output gap generated by the baseline models (blue lines) with that of the HP filter (red lines).

GDP gaps for Latin America¹

In per cent

Graph 5



¹ Computed according to the methodology of C Borio, P Disyatat and M Juselius, "A parsimonious approach to incorporating economic information in measures of potential output", BIS Working Papers, no 442, February 2014. The dynamic output gap equation is augmented with net inflows and country-specific commodity prices. For Brazil and Chile, only commodities prices are used to adjusted the Hodrick-Prescott filter. For Colombia, Mexico and Peru, net inflows are also included in the adjustment. ² Weighted averages based on GDP and PPP exchange rates for Brazil, Chile, Colombia, Mexico and Peru. For Peru, data until Q4 2013.

Sources: Bloomberg; Datastream; IMF, *Balance of Payments; Primary Commodity Prices*; UN Comtrade; UNCTAD Statistics; World Bank; national data; BIS calculations.

The first difference that stands out is that, while the dynamics of the gaps is broadly similar, adjusting for commodity prices and net inflows produces level shifts that often lead to substantially higher output gaps at times when these two variables are buoyant.

This is the case from 2002 on in countries like Chile – buoyed by high copper prices – and Brazil. After the financial crisis and the recovery in commodities and inflows, a widening output gap appears in all countries, and the difference with the simple HP filters also opens up. The magnitude of the adjusted output gaps and the difference with the HP-based gaps differ among countries. The adjusted output gap reaches a maximum of over 6 percentage point of GDP in Chile before the crisis, and this is a difference of 4 percentage points relative to the HP gaps. Brazil and Colombia also display large positive output gaps, with a peak of around 4 percentage points of GDP and also substantial differences with the HP gaps. In Mexico and Peru the difference between the adjusted and the simple HP only appears in the last years and it is of a lower order, peaking at around 2% of GDP. For the region weighted average the picture is similar, with a peak of around 4 percentage points of GDP after the crisis and a maximum difference or around 3% of GDP with the simple HP after the crisis.

In recent years, the gaps have tended to narrow, but the adjusted gap has become negative only in Brazil, while the HP gaps have closed or become negative in all countries. This means that the perception of a change of sign in the output gap is dispelled when the adjusted filter is used. This also applies to the regional average.

How do these results translate into potential output? The level and rate of growth of potential output is unobservable, but it can be simply derived by adding the (adjusted or simple) output gap to the observed level of output. Using the adjusted or the simple output gap yields different levels of potential output and potential growth. So, the relevant comparison is that difference. If the adjusted output gaps is persistently higher than HP output gaps, the level of potential output derived from the adjusted gaps would be lower, and vice versa. Note that a positive divergence between the output gaps is not immediately reflected in a lower level of potential output, as this depends on the accumulated divergence. By the same token, such divergence does not implies a lower rate of growth, as this depends on the changes in the divergence.

In Graph 6, we show the evolution of the difference between the potential output levels, taking as a starting point 2002, a year in which both output gaps were very similar in most countries. This allows to visualize the divergent trajectory of potential output and the implied differences in average potential growth. As expected the largest difference is in Chile, peaking over 4 pp in 2010. This implies a difference of potential compound growth of 0.3 pp between 2002 and 2010. Thereafter, the difference narrows, implying that the average potential growth difference also becomes lower. The pattern is similar in Brazil (peak of 2.5%, implying a difference in potential growth of 0.3 pp. For the rest of countries the divergence has stabilised (Colombia, 3.3% or Peru 2.2%) or has continued increasing (Mexico, 2.9%). For the aggregate of Latin America the range is between 1.9% and 2.4 %, implying a difference of potential compound growth in a range of 0.2 pp.

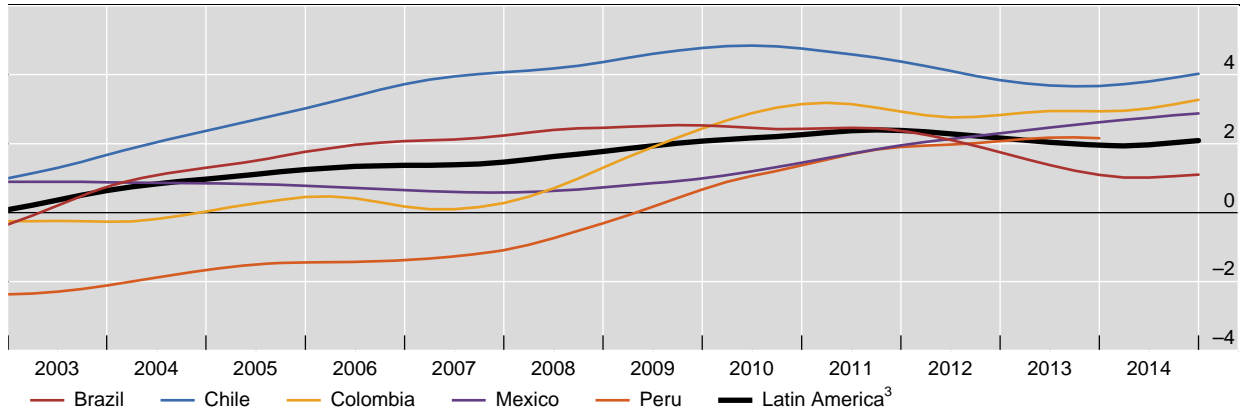
The output gaps presented have been estimated taking into account the whole sample (*ex-post* estimates). It is convenient to compute the output gaps in real time, ie taking into account the information available at a given point in time. In our case, real times estimates for the last part of the sample are obtained by extending the

initial sample of 1981-2004, adding additional quarters starting in Q1 2005, and estimating the output gaps at each moment in time.

Comparison of unadjusted and adjusted potential GDP^{1,2}

In per cent

Graph 6



¹ Computed according to the methodology of C Borio, P Disyatat and M Juselius, "A parsimonious approach to incorporating economic information in measures of potential output", BIS Working Papers, no 442, February 2014. The dynamic output gap equation is augmented with net inflows and country-specific commodity prices. For Brazil and Chile, only commodities prices are used to adjust the Hodrick-Prescott filter. For Colombia, Mexico and Peru, net inflows are also included in the adjustment. ² Defined as the percentage difference of the unadjusted potential GDP against the adjusted potential GDP. ³ Weighted average based on GDP and PPP exchange rates for Brazil, Chile, Colombia, Mexico and Peru. For Peru, data until Q4 2013.

Sources: Bloomberg; Datastream; IMF, *Balance of Payments*; *Primary Commodity Prices*; UN Comtrade; UNCTAD Statistics; World Bank; national data; BIS calculations.

On the one hand, real time output gaps allow to assess whether the adjusted gaps offer a more precise view of the actual cyclical position of the economy than simple HP gaps, when compared with the ex-post computations. On the other hand, policy decisions are made based on current developments and the forecasts of the future based on the Therefore, policy discussions have to be based on real-time estimates.

A well-known problem of statistical filters like the HP is their poor performance in real-time, due to the so-called endpoint problem. The HP filter is two-sided, so towards the end of the sample it is increasingly reliant on missing observations that have to be forecast somehow. So, it can happen that an overheating of the economy is recognised only ex-post, as sufficient observations become available, but not in real-time., which is precisely when policymakers would need to act. Borio et al (2013) show that their finance-neutral filter provides a better performance in real-time, as conditioning on financial developments mitigates the end-point problem.

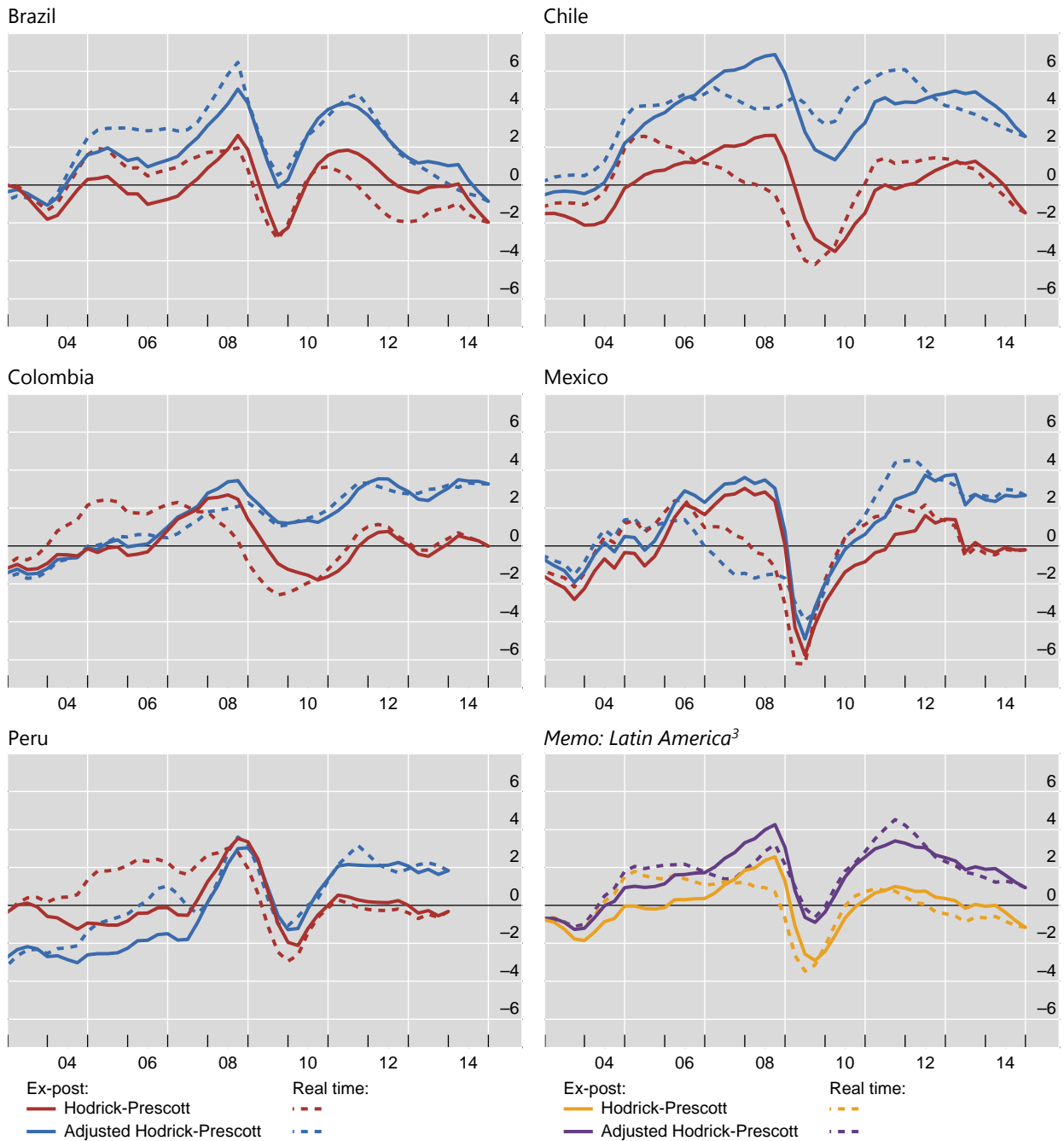
This appears to be the case, in most cases, also for our commodity- and inflows-neutral filter. In Graph 7, we compare ex-post (solid lines) and real-time (dashed lines) estimates provided by the commodity- and inflows-neutral and the HP filter for the period 2003-14. The real-time performance of the HP filter is particularly poor for Brazil, where the HP filter fails to recognise that the economy was overheating after 2011. On the contrary, the estimates of the adjusted filter seem to be more stable in real-time. For the other countries the differences between real-time and ex-post estimates are similar, but, again, in all case the HP filter fails to identify large output gaps after the Great Recession, while the adjusted filter does. If anything, the adjusted

filter identifies in real-time even higher output gaps in the post crisis phase, as is clearly seen in the aggregate for Latin America.

Comparison of unadjusted and adjusted (ex-post and real time) GDP gap^{1,2}

In per cent

Graph 7



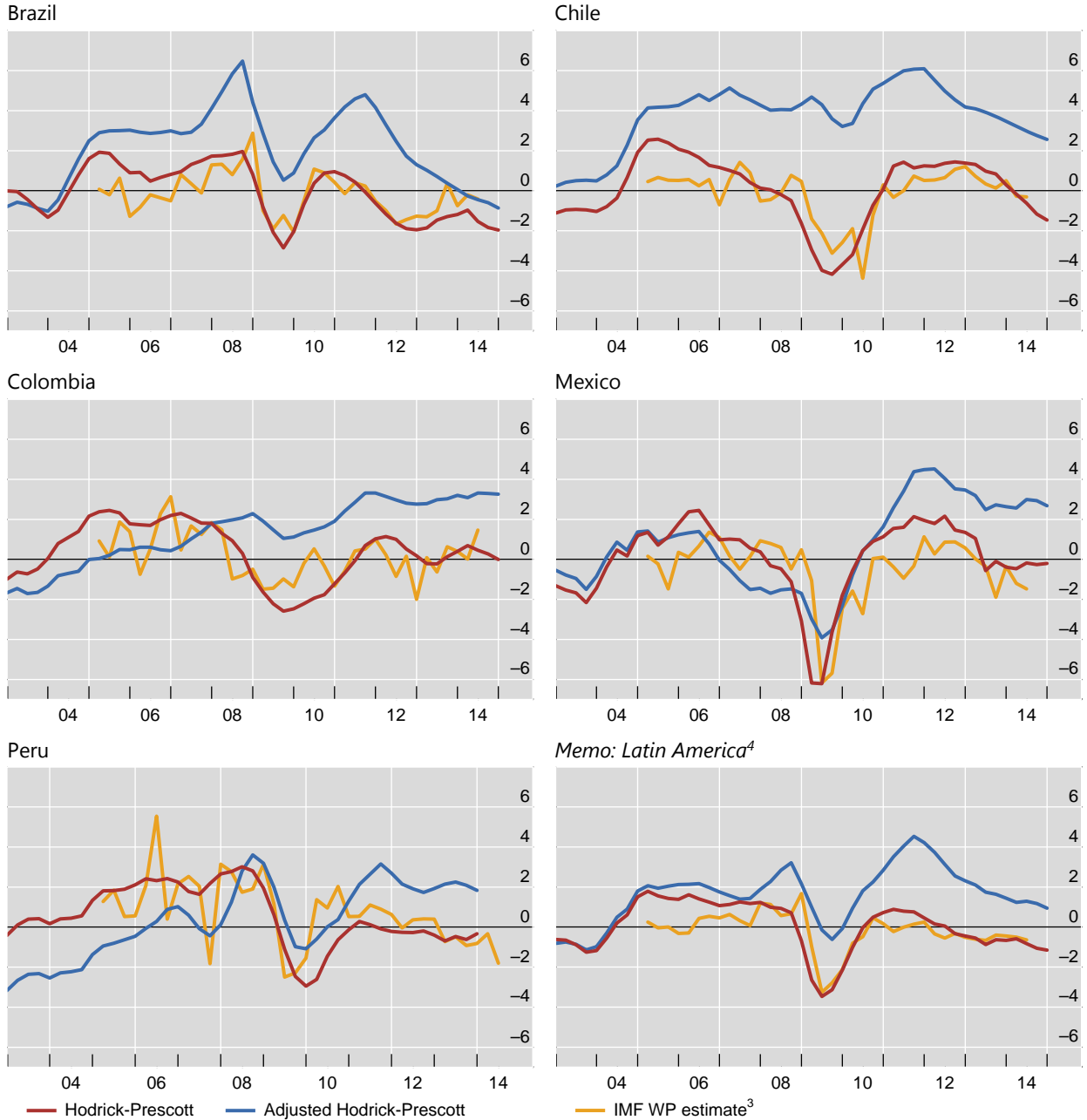
¹ Computed according to the methodology of C Borio, P Disyatat and M Juselius, "A parsimonious approach to incorporating economic information in measures of potential output", BIS Working Papers, no 442, February 2014. The dynamic output gap equation is augmented with net inflows and country-specific commodity prices. For Brazil and Chile, only commodities prices are used to adjusted the Hodrick-Prescott filter. For Colombia, Mexico and Peru, net inflows are also included in the adjustment. ² Real time estimation started in Q1 2005 and it was estimated quarter by quarter until Q4 2014 (except for PE, which ends in Q4 2013). ³ Weighted averages based on GDP and PPP exchange rates for Brazil, Chile, Colombia, Mexico and Peru. For Peru, data until Q4 2013.

Sources: Bloomberg; Datastream; IMF, *Balance of Payments*; *Primary Commodity Prices*; UN Comtrade; UNCTAD Statistics; World Bank; national data; BIS calculations.

Comparison of real time output gaps. Adjusted and unadjusted versus IMF working paper estimates^{1,2}

In per cent

Graph 8



¹ Computed according to the methodology of C Borio, P Disyatat and M Juselius, "A parsimonious approach to incorporating economic information in measures of potential output", BIS Working Papers, no 442, February 2014. The dynamic output gap equation is augmented with net inflows and country-specific commodity prices. For Brazil and Chile, only commodities prices are used to adjust the Hodrick-Prescott filter. For Colombia, Mexico and Peru, net inflows are also included in the adjustment. ² Real time estimation started in Q1 2005 and it was estimated quarter by quarter until Q4 2014 (except for PE, which ends in Q4 2013). ³ Estimates from F Grigoli, A Herman, A Swiston and G Di Bella, "Output gap uncertainty and real-time monetary policy", IMF Working Papers 15/14, International Monetary Fund. ⁴ Weighted averages based on GDP and PPP exchange rates for Brazil, Chile, Colombia, Mexico and Peru. For Peru, data until Q4 2013.

Sources: Bloomberg; Datastream; IMF, *Balance of Payments; Primary Commodity Prices*; UN Comtrade; UNCTAD Statistics; World Bank; national data; BIS calculations.

However, assuming simple HP estimates as a benchmark for policy determination is not fair either, because they do not necessarily reflect the assessment of output gaps that policymakers have at each point in time. It is expected that such assessment is a bit more sophisticated, either because of the use of other estimation methods or because there is some additional judgement. It is not straightforward, though, to obtain these estimates, first because official estimates of output gaps are not usually published and second because that assessment evolves in time, implying different assessments for a period around that period (much in the line of real-time estimations). Fortunately, we can partially overcome both obstacles by using a recent research paper by the IMF (see Grigoli et. al (2015)), where the authors compile the GDP forecast vintages for Latin American countries from the successive WEOs and double-check numbers with the country desks. From these projections, real-time estimates of potential output and output gaps are derived by using an HP filter, enabling the construction of a series of real-time output gaps which includes policymakers' judgmental forecasts.¹⁷ An obvious caveat is that these are the IMF-implied real-time output gaps, not those of national policymakers. As they are used in policy discussions with national authorities, both may differ but a substantial consistency among both is expected.

Graph 8 displays now the three definitions of real-time output gap estimates: adjusted output gaps, simple HP and HP with policymakers' forecasts. It is remarkable how close the policymakers and the simple HP estimates are, even if simple HP estimates are smoother. This suggests that real-time simple HP estimates is a good indicator of the policymakers assessment in real time and that we can rely on them for the policy discussion.

IV. Policy implications

The policy implications of our analysis are, in principle, rather straightforward. Since policymakers underestimate output gaps in good times, there will tend to be a procyclical bias in their policy. Note that for most of the period the HP-based output gap was negative, while adjusting by the commodity and capital inflows cycle it was positive. Therefore, the policy reaction, *ceteris paribus*, would have been a loosening of both monetary and fiscal policy. Notwithstanding this, the actual bias in the policy stance has to consider how other variables move relative to the objectives of policy authorities.

Starting with **monetary policy**, all countries analysed are inflation targeters, so their primary objective is to attain the target inflation level in the short to medium run. This can be compatible with a secondary objective of stabilising output around

¹⁷ We thank Alexander Herman for providing the output gap estimates used in the paper. Strictly speaking the real time output gaps are not exactly those considered by the policymakers. The forecasts used in their paper are ex-post, from the t+1 (Fall WEO, for year t) and there is a smoothing process for these forecasts.

potential, ie closing the output gap. This characterisation of monetary policy is widely accepted and it is conveyed in Taylor rules.¹⁸

Let us consider the impact of a positive commodity shock on the monetary policy stance¹⁹. First, it is expected to have a positive impact on activity, through the terms of trade and income effect. This would widen the output gap and would in principle call for a tightening of monetary policy. But note that, according the VAR results, the positive commodity shock also results in an exchange rate appreciation, inducing a downward pressure on inflation, whose magnitude depends on the degree of pass-through. This would drag the components of the Taylor rule into different directions. If inflation is the dominant factor in the policy reaction and/or the deviations of inflation are higher than the output gap, a loosening of policy might follow, and the monetary policy would not be stabilising in terms of activity.

Moreover, if real appreciation is a significant concern, the case for a policy tightening would be even weaker. Note that increasing rates in those circumstances could be counterproductive: in an expansionary context, a bout of capital inflows could follow as relative yields improve, offsetting the contractionary effect on demand and putting more upward pressure on the exchange rate.

All in all, the commodity cycle complicates the management of monetary policy and limits the space for countercyclical policy.

In the case of **fiscal policy**, for those countries where commodity revenues is a relevant share of government income (Mexico, Colombia and Chile in our sample), the increase in revenues derived from a positive commodity price shock could foster more expenditure and therefore, induce a procyclical bias of fiscal policy.²⁰ Even for countries whose governments do not profit directly from commodity revenues, the boost to demand and tax collection can also bias policy towards expansion and so lead to procyclicality. However, there are mechanisms to mitigate or offset this bias, such as establishing and following fiscal rules, or the operation of stabilisation or commodity-related funds.

In order to assess the hypothesis of procyclicality bias in the case of the fiscal policy, we consider the change in the structural primary balance as the gauge of the fiscal stance. A decrease (increase) of the structural primary balance is defined as a positive (negative) fiscal impulse and therefore as an indicator of an expansionary (contractionary) fiscal policy stance.

We construct the structural fiscal balance for our sample of 5 Latin American countries by obtaining the structural component for each type of fiscal revenue (personal income tax, corporate income tax, social security contributions and indirect taxes) using standard OECD elasticities (see Girouard and André (2005)). Therefore, the structural balance is defined as follows:

¹⁸ There is vast literature on the estimation of Taylor rules for emerging countries such as Mohanty and Klau (2005) and Corbo (2002) for Latin America. I Carvalho and Moura (2010) and Aizenmann et al. (2011) that exchange rate stabilisation as an objective for certain central banks.

¹⁹ The analysis of capital inflows is similar, only that, as mentioned above, the results of the VAR are less straightforward.

²⁰ Alberola et al (2015) show that fiscal policy in Latin America is procyclical even when conditioning for the impact of commodity revenues on the fiscal policy stance.

$$b_{j,t}^* = \frac{\left(\sum_{i=1}^4 T_{ij,t} \left(\frac{Y_{j,t}^*}{Y_{j,t}} \right)^{\varepsilon_{\tau_i,y}^j} \right) - G_{j,t} + X_{j,t}}{Y_{j,t}^*}$$

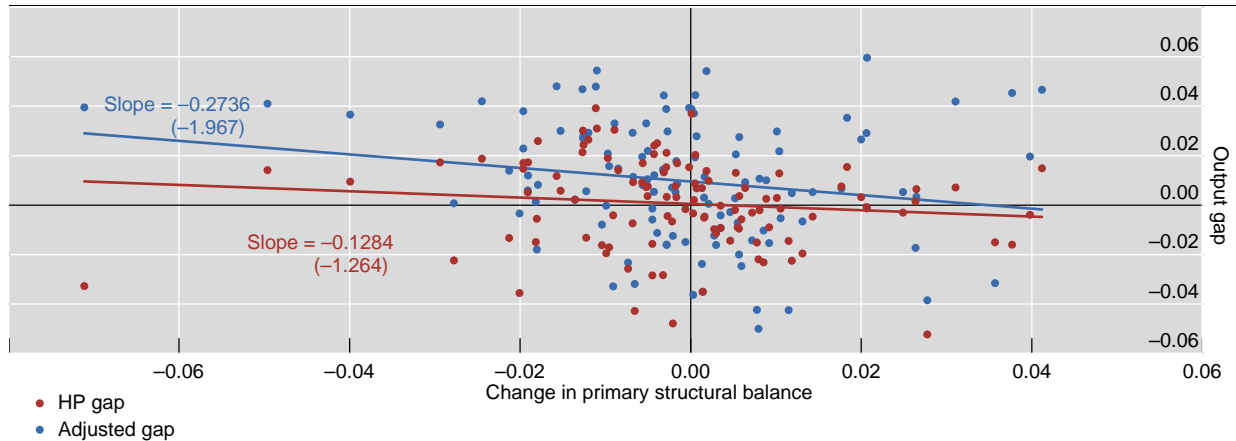
where $b_{j,t}^*$ is the structural balance, as percentage of potential output, $T_{ij,t}$ is the tax revenue from category i , $\varepsilon_{\tau_i,y}^j$ is the elasticity of tax revenues to output, $G_{j,t}$ is fiscal expenditure and $X_{j,t}$ is other net fiscal income. $Y_{j,t}$ is the observed output and we use $Y_{j,t}^*$, the potential output, as obtained through the real time HP filter²¹. Finally, the structural primary balance is obtained by dismissing interest payments from the expenditures.

In order to analyse the cyclicity of the fiscal stance, we plot the changes in the structural primary balance against the output gap (Graph 9). The red dots and regression line consider the real time HP gap and the blue dots and line considering the adjusted gap. Both slopes are negative, suggesting a procyclical behaviour of fiscal policy. But the slope is steeper in the case of the adjusted gap, indicating a more procyclical fiscal stance if the adjusted gap is taken as benchmark. Furthermore, the slope coefficient is non-significant in the case of the HP output gap, while it is in the case of the adjusted gap. This implies that fiscal policy is statistically neutral in the case of the HP output gap, but it is significantly procyclical in the case of the adjusted output gap. This hints at a procyclical bias in the Latin American countries derived from the combined effect of commodity prices and capital inflows.

Procyclicality of fiscal stance

Change in primary structural balance and real time HP output gap vs adjusted output gap¹

Graph 9



¹ The primary structural balance is constructed using the tax revenue elasticities from Alberola et al (2016) and including commodity revenues into each tax revenue category. For the cycle, it also considers the real time HP gap. Each point in the graph corresponds to a country – year observation of fiscal impulse and output gap.

Sources: Bloomberg; Datastream; IMF, *Balance of Payments*; *Primary Commodity Prices*; UN Comtrade; UNCTAD Statistics; World Bank; national data; BIS calculations.

²¹ Ardanaz et al (2015) compare structural balances calculated with real time data and ex-post realised values of GDP growth and find significant average differences for the 2002-2012 period. We use here the real time HP and not the IMF estimates due to the short sample length of the latter

V. Conclusions

We have proposed and described a transparent and parsimonious method to adjust estimates of the output gap to account for the impact of capital flows and commodity prices. This is particularly relevant for Latin American countries, as their production structure and the volatility of their business cycles makes them more vulnerable to external factors, such as commodity price 'supercycles' and capital inflows spawned by loose monetary policies abroad.

Our findings suggest that commodity price 'supercycle' has been a more relevant factor than inflows in explaining the output gaps so adjusted. In all countries, commodity prices are significant in the multivariate filter, while capital inflows are only significant in three of the five cases. In some cases the evolution of commodity prices and capital inflows is highly correlated, but this is not a general feature of the analysis. The commodity prices, possibly also because they incorporate a component which is tied to global demand. So, according to our analysis, real factors seem to play a larger role than purely financial factors in explaining the business cycles of Latin American countries.

In terms of the diagnosis of the state of the business cycle, our results suggest that the use of standard HP filter to compute the output gap leads to a substantial underappreciation of imbalances building up due to buoyant commodity prices and financial inflows. This is also the case when the HP filter is computed in real time, a situation closer to that faced by policymakers. By contrast, adjusting the HP filter with commodity prices and net inflows yields results that are more robust to successive revisions, and point to a marked overheating of the economy after 2010.

In terms of policy prescriptions, our results suggest that downplaying the role of the commodity 'supercycle' may have led policymakers to an excessively optimistic assessment of their economies' potential. This in turn may have induced a procyclical bias, in particular in fiscal policy. The temptation of spending the extra revenues accruing directly from the commodity bonanza and/or the impulse on domestic demand from higher incomes is, in practice, hard to restrain. Moreover, this procyclical bias may have contributed to boost activity further beyond sustainable levels in the expansionary cycle.

The stabilisation role of monetary policy on activity is challenged by the commodity and capital inflow cycles as inflation and demand may move in different directions. Moreover, tightening monetary policy in the expansionary phase may be counterproductive, as higher rates may induce larger capital inflows and exchange rate appreciations boosting further domestic demand and widening the imbalances. This generated a policy dilemma for Latin American countries in the booming phase of the commodity and capital flow cycle.

The limits of monetary policy under these circumstances imply that fiscal policy should lead the stabilisation effort. However, our analysis has shown that fiscal policy has been procyclical once the impact of commodity and capital cycles are taken into account.

After the reversal of the commodity supercycle and a less buoyant financing environment, the policy space to counteract the deterioration of economic activity of the region is limited by the worsening of public accounts and inflation pressures in most countries, suggesting that the countercyclical capacity of policies is severely constrained, also in this downward phase of the cycle.

All in all, the paper suggests that improving the assessment the output gaps by taking into account commodity price and external financial cycles could help policies to stabilise more effectively activity around the potential output, in particular through facilitating the implementation of more countercyclical fiscal policies

References

Aizenman, J, M Hutchison and I Noy (2011): "Inflation Targeting and Real Exchange Rates in Emerging Markets," *World Development*, vol 39(5), pp 712–724.

Alberola, E and G Benigno (2016): "Revisiting the Commodity Resource Curse: a financial channel perspective", mimeo

Alberola, E, I Kataryniuk, A Melguizo and J R Orozco (2016): "Fiscal policy and the cycle in Latin America: The role of the financing conditions and fiscal rules", *BIS Working Papers*, no. 453.

Alberola, E, A Estrada and D Santabarbara (2014): "Growth and imbalances in Spain: A reassessment of the output gap", *Journal of the Spanish Economic Association*, vol 5, pp 333–56.

Amador, J, JE Gomez, JN Ojeda, OF Jaulin and F Tenjo (2016): "Mind the gap: computing finance neutral output gaps in Latin American Economies", mimeo.

Girouard, N. and C. André (2005) "Measuring cyclically adjusted budget balances for OECD countries", OECD Economics Department Working Papers 434.

Anzuini, A, MJ Lombardi and P Pagano (2013): "The Impact of Monetary Policy Shocks on Commodity Prices", *International Journal of Central Banking*, vol 9, pp 125–50.

Ardanaz, M, A Corbacho, A Gonzáles and N Tolsa Caballero (2015): "Structural Fiscal Balances in Latin America and the Caribbean. New Dataset and Estimations", IDB Working Paper N° IDB-WP-579

Baxter, M and RG King (1999): "Measuring Business Cycles: Approximate Band-Pass Filters for Economic Time Series", *Review of Economics and Statistics*, vol 81, pp 575–93.

Benes, J, K Clinton, R Garcia-Saltos, M Johnson, D Laxton, P Manchevand T, Matheson (2010): "Estimating potential output with a multivariate filter", *IMF Working Papers*, no 10/285.

Borio, C (2012): "The financial cycle and macroeconomics: what have we learnt?", *BIS Working Papers*, no 395.

Borio, C, P Disyatat and M Juselius (2013): "Rethinking potential output: Embedding information about the financial cycle", *BIS Working Papers*, no 404.

Borio, C, P Disyatat and M Juselius (2014): "A parsimonious approach to incorporating economic information in measures of potential output", *BIS Working Papers*, no 442.

Calvo, G and E Talvi (2005): "Sudden stops, financial factors and economic collapse in Latin America", *NBER Working Papers*, no 11153.

Céspedes LF and A Velasco (2012): "Macroeconomic performance during commodity price booms and busts", *NBER Working Papers*, no 18569.

- Christiano, LJ and TJ Fitzgerald (2003): "The band-pass filter", *International Economic Review*, vol 44, pp 435–65.
- Claessens, S, M Kose and M Terrones (2011): "How do business and financial cycles interact?", *IMF Working Papers*, no 11/88.
- Corden, W.M. (1984) "Booming sector and Dutch disease economics: survey and consolidation". *Oxford Economics Papers*, 36, pp 359–380.
- Edwards, S (2004): "Financial openness, sudden stops and current account reversals", *American Economic Review*, vol 94, pp 59–64.
- IMF (2015), "Where are commodity exporters headed? Output growth in the aftermath of the commodity boom", *World Economic Outlook*, October 2015, ch. 2, pp 65-104
- Grigoli, F, A Herman, A Swiston and G di Bella (2015): "Output gap uncertainty and real-time monetary policy", *IMF Working papers*, no 15/14.
- Kaminsky, G, CM Reinhart and CA Vegh (2005): "When it rains, it pours: Procyclical capital flows and macroeconomic policies", *NBER Macroeconomics Annual*.
- Kohlscheen, E, F H Avalos and A Schrimpf (2016): "When the walk is not random: commodity prices and exchange rates", *BIS Working Papers*, no 551.
- Mohanty, MS and M Klau (2005). *Monetary policy rules in emerging market economies: issues and evidence*, pp. 205-245. Springer Berlin Heidelberg.
- Rabanal, P and M. Taheri (2015): "Financial factors: Implications for output gaps", *IMF Working Papers*, no 15/153.

Previous volumes in this series

No	Title	Author
567 June 2016	Understanding the changing equilibrium real interest rates in Asia-Pacific	Feng Zhu
566 May 2016	Monetary facts revisited	Pavel Gertler and Boris Hofmann
565 May 2016	The Collateral Trap	Frédéric Boissay and Russell Cooper
564 May 2016	Moore's Law vs. Murphy's Law in the financial system: who's winning?	Andrew W Lo
563 May 2016	Who supplies liquidity, how and when?	Bruno Biais, Fany Declerck and Sophie Moinas
562 May 2016	Expectations and investment	Nicola Gennaioli, Yueran Ma and Andrei Shleifer
561 May 2016	Mobile collateral versus immobile collateral	Gary Gorton and Tyler Muir
560 May 2016	Has the pricing of stocks become more global?	Ivan Petzev, Andreas Schrimpf and Alexander F Wagner
559 April 2016	A comparative analysis of developments in central bank balance sheet composition	Christiaan Pattipeilohy
558 April 2016	Why bank capital matters for monetary policy	Leonardo Gambacorta and Hyun Song Shin
557 April 2016	How Does Bank Capital Affect the Supply of Mortgages? Evidence from a Randomized Experiment	Valentina Michelangeli and Enrico Sette
556 April 2016	Threat of Entry and Debt Maturity: Evidence from Airlines	Gianpaolo Parise
555 March 2016	The causal effect of house prices on mortgage demand and mortgage supply: evidence from Switzerland	Christoph Basten and Catherine Koch
554 March 2016	Can a Bank Run Be Stopped? Government Guarantees and the Run on Continental Illinois	Mark Carlson and Jonathan Rose
553 March 2016	What drives the short-run costs of fiscal consolidation? Evidence from OECD countries	Ryan Banerjee and Fabrizio Zampolli
552 March 2016	Fiscal sustainability and the financial cycle	Claudio Borio, Marco Lombardi and Fabrizio Zampolli
551 March 2016	When the Walk is not Random: Commodity Prices and Exchange Rates	Emanuel Kohlscheen, Fernando H. Avalos and Andreas Schrimpf

All volumes are available on our website www.bis.org.